

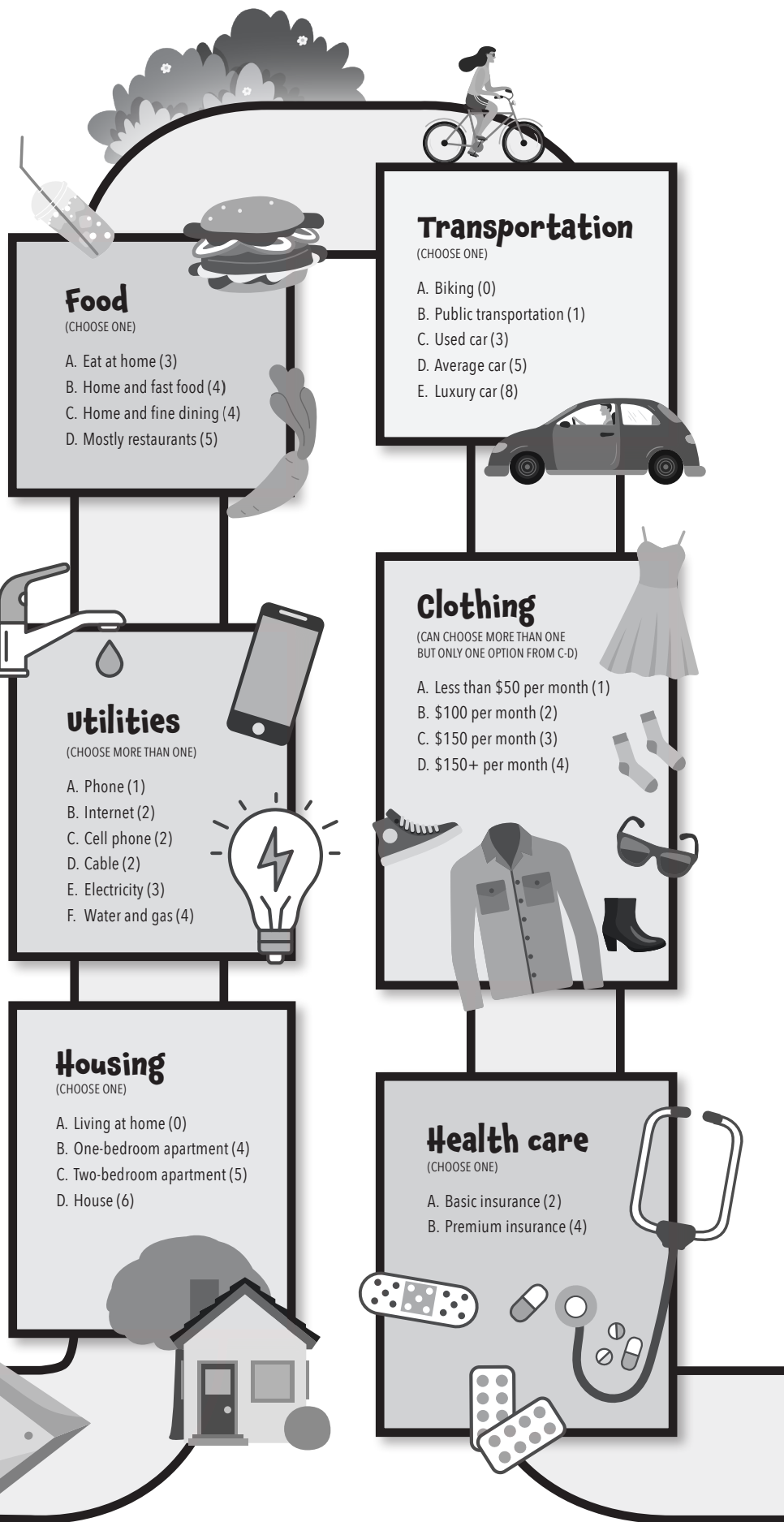
play the game

Try this lifestyle calculator—how much money do you need to support your dream lifestyle?

Wondering about how much money you'll need to make in your future career to live the life you want? This game can help you figure that out and offer some possible career paths based on your lifestyle preferences!

DIRECTIONS:

- As you move along the game board, each square will have a prompt for you to choose a lifestyle option/expense based on what you envision for life after college.
- Circle the options that best fit your ideal lifestyle as you move across the board. Note: Some of the boxes allow you to choose more than one option.
- Total the number of circled points and write down your answer in the final space. Using the Reality Check Results on Page 88, find the column that matches your number of points, and write down the salary range for that column in the box above. Next, choose one or more occupations you might consider in order to earn this salary.



Extras

(Choose more than one)

- A. Miscellaneous small purchases like coffee, gifts, etc. (1)
- B. Pet care (3)
- C. Vacation spending, not including hotel and travel expenses (3)
- D. Gadgets (4)
- E. Home furnishings (5)

Savings per paycheck

(Choose one)

- A. 2% (1)
- B. 5% (2)
- C. 7% (2)
- D. 10% - highly recommended! (3)

Entertainment

(CHOOSE MORE THAN ONE)

- A. Go out at least once a week (2)
- B. Attend concerts, weekend trips and other activities (3)
- C. Longer vacations and adventures that will require hotel and travel expenses like plane tickets (3)

Student loan

(Choose one)

- A. Certificate program (1)
- B. Associate degree (2)
- C. Bachelor's degree (3)
- D. Master's degree (4)
- E. Medical school/dental school/law school, etc. (7)

Beauty/Grooming

(CHOOSE MORE THAN ONE)

- A. Basics (toiletries, face wash, shower items) (1)
- B. Gym membership (2)
- C. Hair and skin services (2)
- D. Extras (makeup, perfume/cologne) (3)
- E. Luxuries (designer brands) (4)

**TOTAL UP
YOUR POINTS!**

arkansas
next

a guide to life after high school

arkansasnext.com

Reality Check Results

(Salaries are based on the average for Arkansans)

29 or less \$30k-40k	Agriculture and Food Science Tech	Animal Trainer	Artist	Bakers	Carpenter	Counselor	Travel Guide
30-39 \$41k-50k	Auto Body Repairer	Chef/Head Cook	Coach/Scout	Writer/Author	Welder	Social Worker	Real Estate Agent
40-49 \$51k-60k	Dietician and Nutritionist	High School Teacher	Librarian	Tax Examiner and Collector	Web Developer		
50-59 \$61k-70k	Accountant	Architect	Art director	Biomedical Engineer	Technical Writer	Registered Nurse	Public Relations Specialist
60-69 \$71k-80k	Chemist	Conservation Scientist	Construction Manager	Radiation Therapist	Microbiologist	Mechanical Engineer	Industrial Engineer
70-79 \$81k-90k	App Developer	Civil Engineer	Psychologist	Political Science Professor	Food Scientist	Electrical Engineer	
80-89 \$91k-100k	Financial Advisor	Construction Manager	Nurse Practitioner	Physician Assistant	Software Developer	Pilot	
90 or more More than \$101k	Medical Doctor (all specialties)	Dentist	Nuclear Engineer	Pharmacist	CEO	Financial Manager	

